




**PHASE II SUSTAINABILITY STUDY**  
Mohawk Trail and Hawlemont regional school districts

---

---

---

---

---

---


---

---

1

**AGENDA**

- Charge and Problem
- Update of Ongoing work
  - Steering Committee
  - Advisory Teams
  - Community Outreach
  - Educational Indicators/quality
- Feedback questions




---

---

---

---

---

---


---

---

2

**CHARGE**

Support ongoing study and analysis of the operating and organizational structures of the two Regional School Districts




---

---

---

---

---

---

---

---

3

# THE PROBLEM

Our region, like many rural areas across the northeast, faces educational and fiscal challenges associated with:

- declining enrollment,
- rising operational costs,
- relatively flat state aid, and
- increasing needs of our student body.

We must continue to explore options and opportunities - in light of these challenges - to ensure our students receive a high-quality set of educational experiences (academics, co-curricular, services and supports) they need to ensure success in college, career and life.

---

---

---

---

---

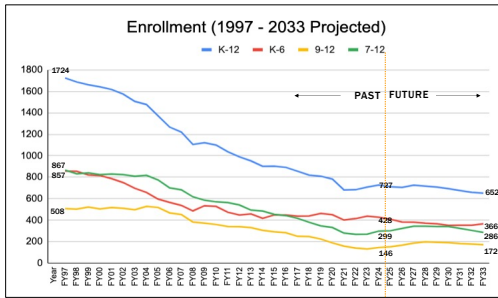
---

---

---

4

## MOHAWK TRAIL RSD



SOURCE: DESE, MARS/NESDEC

5

---

---

---

---

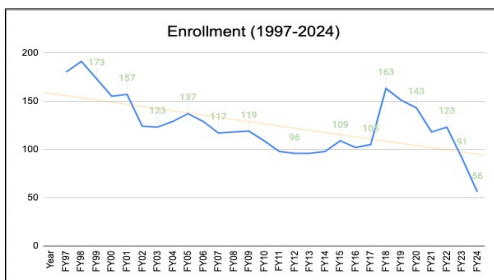
---

---

---

---

## HAWLEMONT RSD



SOURCE: DESE

6

---

---

---

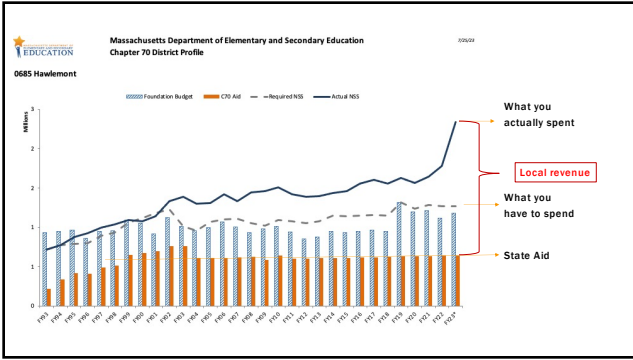
---

---

---

---

---



7

---

---

---

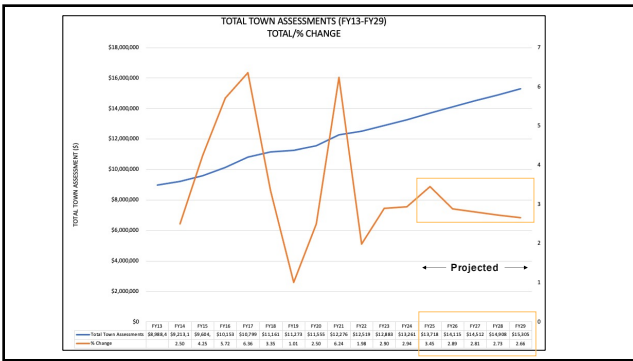
---

---

---

---

---



8

---

---

---

---

---

---

---

---

Town	Population 2022	Tot. est. value 2022	Tot. est. value 2023	% Change	State Aid 2023	Local Revenue 2023	Total Revenue 2023	Required NES 2023	% Shortfall	Population 2023	Tot. est. value 2023	Tot. est. value 2024	% Change	State Aid 2024	Local Revenue 2024	Total Revenue 2024	Required NES 2024	% Shortfall
Attfield	1,485	\$1,411	\$2,300	63.0%	\$1,200	\$1,211	\$2,411	\$2,300	0%	1,485	\$1,411	\$2,300	63.0%	\$1,200	\$1,211	\$2,411	\$2,300	0%
Buckfield	1,810	\$1,756	\$1,423	-18.4%	\$1,500	\$1,423	\$1,523	\$1,500	-1.5%	1,810	\$1,756	\$1,423	-18.4%	\$1,500	\$1,423	\$1,523	\$1,500	-1.5%
Cheshire	1,165	\$20,770	\$1,081	-94.7%	\$1,081	\$1,081	\$1,081	\$1,081	0%	1,165	\$20,770	\$1,081	-94.7%	\$1,081	\$1,081	\$1,081	\$1,081	0%
Dorwin	1,699	\$16,989	\$4,185	-24.7%	\$4,185	\$4,185	\$4,185	\$4,185	0%	1,699	\$16,989	\$4,185	-24.7%	\$4,185	\$4,185	\$4,185	\$4,185	0%
Hewley	353	\$16,800	\$4,535	-26.7%	\$4,535	\$4,535	\$4,535	\$4,535	0%	353	\$16,800	\$4,535	-26.7%	\$4,535	\$4,535	\$4,535	\$4,535	0%
North	723	\$17,421	\$4,136	-23.4%	\$4,136	\$4,136	\$4,136	\$4,136	0%	723	\$17,421	\$4,136	-23.4%	\$4,136	\$4,136	\$4,136	\$4,136	0%
Northfield	425	\$17,141	\$1,744	-89.8%	\$1,744	\$1,744	\$1,744	\$1,744	0%	425	\$17,141	\$1,744	-89.8%	\$1,744	\$1,744	\$1,744	\$1,744	0%
Northwest	1,484	\$1,328	\$4,450	233.3%	\$4,450	\$4,450	\$4,450	\$4,450	0%	1,484	\$1,328	\$4,450	233.3%	\$4,450	\$4,450	\$4,450	\$4,450	0%

Town Financial Variables....part of the equation...

9

---

---

---

---

---

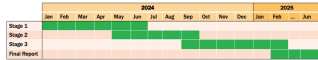
---

---

---

## OUR PLAN.

- CONTEXT** Stage 1. Process Organization, Context Setting, Community Engagement (A)  
Target dates: January 1, 2024 through May 1, 2024
  - OPTIONS** Stage 2. Deep Data Dive & Analysis, Option Generation  
Target dates: May 1, 2024 through August 1, 2024
  - MODELING** Stage 3. Preferred Models, Community Engagement (B), Final Report/Next Steps  
Target dates: August 1, 2024 through January 15, 2025
- Final Report Delivery: SPRING, 2025**



10

---

---

---

---

---

---

---

---

---

---

## ONGOING WORK

- Organization and submission of work plan
- Weekly meetings with districts lead team, ongoing communication with chairs and superintendent
- Research team meetings – group and individual
- Historical review, contact with regional stakeholders
- Two-day visits with educational/outreach team to all five schools
- Steering committee formed; advisory teams being planned.**
- Further school visits planned with classroom observations and teacher focus groups
- Launch of initial data organization (enrollment, finance, buildings, educational indicators)
- Comprehensive document review of historical reports, synthesis and organization of themes
- All administrative work (contracts, required paperwork, invoices)
- Community outreach ongoing (Towns & Schools) – Initial Survey/Intel

11

---

---

---

---

---

---

---

---

---

---

## STEERING COMMITTEE LAUNCHED ON FEBRUARY 3

- Thought partners
- Review/critique/enhance deliverables
- Evaluate (Options and opportunities)
- Communication (to-from) and advocacy
- Two meetings held; next meeting 3/21, 5:30



12

---

---

---

---

---

---

---

---

---

---

# STEERING COMMITTEE MEMBERS

Greg Lilly, Ashfield, District Athletic Director  
 Paula Consolo, Buckland, Finance Committee  
 Jenny Van Wyk, Colrain, Parent and Educator  
 Open seat, **Charlemont**  
 Ellen Purinton, Hawley, Community Member  
 Elizabeth Finn, Heath, Parent  
 Judy Cole, Plainfield, Select Board  
 Paul Hollings, Shelburne, Community Member  
 Robin Pease, Mohawk Trail/Hawlemont Director of Facilities and Transportation  
 Kristen Tilton-Baker, Executive Director, Mary Lyon Foundation  
 Sheryl Stanton, Mohawk Trail/Hawlemont Superintendent of Schools  
 Martha Thurber, Chair, Mohawk Trail School Committee  
 Elizabeth Van Iderstine, Chair, Hawlemont School Committee



13

---

---

---

---

---

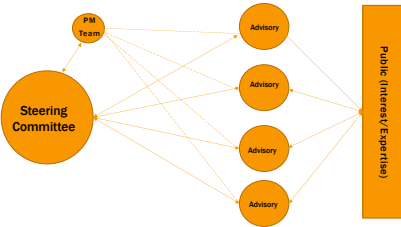
---

---

---

# ADVISORY TEAMS

Advisory Team Possibilities:  
 Project Management (PM)  
 Education (Quality?)  
 Finance  
 Operations  
 Community  
 Engagement/PR



14

---

---

---

---

---

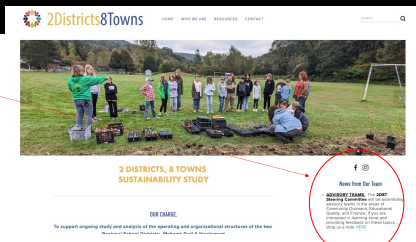
---

---

---

# ADVISORY TEAM

Interested?



15

---

---

---

---

---

---

---

---

**EDUCATIONAL INDICATORS/ QUALITY**

- Educational Indicators, 5 year historical
- Classroom observations at each school
- Teacher focus groups
- Springpoint classroom visit tool
- Educational Quality report completed by the end of June

16

---

---

---

---

---

---

---

---

**COMMUNITY OUTREACH**

- Meetings with town managers
- Initial meeting with School Committee
- Met with legislative delegation
- Meetings with all eight select boards/finance comm. (5 completed, 3 to go)
- Regular updates to local press (monthly update)
- Community Outreach Advisory Team
- Meeting planned with faculty/staff
- Community Engagement sessions at each school
- Website and social media
- Surveys to come

17

---

---

---

---

---

---

---

---

2 DISTRICTS, 8 TOWNS  
SUSTAINABILITY STUDY

News from Our Team

18

---

---

---

---

---

---

---

---

# FACEBOOK AND INSTAGRAM

19

---

---

---

---

---

---

---

---

# SCHOOL COMMUNITY ENGAGEMENT SESSIONS

Please spread the word!

School	Dates, times
Buckland Shelburne Elementary	March 11, 6-7:15 pm, cafeteria, with Zoom option
Colrain Central School	April 9, 6-7:15 pm, cafeteria, with Zoom option
Sanderson Academy	April 11, 6-7:15 pm, all virtual on Zoom
Mohawk Trail Regional School	April 24, 6-7:15 pm, superintendents' conference room with Zoom option
Hawlemont Elementary	April 25, 5:30 – 7:00 pm, cafeteria, with Zoom option, dinner and childcare to be provided

20

---

---

---

---

---

---

---

---

# FEEDBACK QUESTIONS

1. Reflect on question
2. Brief discussion – 5 minutes
3. Write comments in the chat box

5 Questions, 2 Closing Prompts

5:50p

21

---

---

---

---

---

---

---

---

## YOUR FEEDBACK: Q1

### 1. What are the strengths of the districts and/or schools?

- what the districts and schools do well
- what you highly value and appreciate

5:50-6:00

22

---

---

---

---

---

---

---

---

## YOUR FEEDBACK: Q2

### 2. What are the challenges and/or weaknesses of the districts/schools?

- tension points
- gaps
- things you'd like to change/improve

6:00-6:10

23

---

---

---

---

---

---

---

---

## YOUR FEEDBACK: Q3

### 3. What would you protect at all costs and could not do without (your non-negotiables)?

6:10-6:20

24

---

---

---

---

---

---

---

---



## YOUR FEEDBACK: Q4

4. What options and potential solutions should be considered to build upon the district's/school's strengths while addressing challenges and gaps?

6:20-6:30

25

---

---

---

---

---

---

---

---

## YOUR FEEDBACK: Q5

5. What is your vision for the Mohawk Trail and Hawlemont districts in 10 years?

6:30-6:40

26

---

---

---

---

---

---

---

---

## QUESTIONS AND DISCUSSION

- What questions do you have now or would you like us to address in the future?
- Is there anything else we should know?

6:40-6:45

27

---

---

---

---

---

---

---

---

## CONTACT



[Jakeeberwein@gmail.com](mailto:Jakeeberwein@gmail.com)  
413.329.4336

---

---

---

---

---

---

---